

Opening

Oboe

$\text{♩} = 80$

7

2 4

A

16

3 4 3 4 3 4

Alto Saxophone

Opening

$\text{♩} = 80$

8

3

11 **A**

4

2

Celesta

Opening

♩ = 80

6

11 **A**

16

19

Violin 1

Opening

$\text{♩} = 80$



The musical score for Violin 1, titled "Opening", is written in treble clef. It begins with a tempo marking of $\text{♩} = 80$. The first system (measures 1-9) is in 4/4 time and features a series of whole notes on the staff, with a key signature change to one sharp (F#) in measure 7. The second system (measures 10-15) starts with a measure rest, followed by a key signature change to one flat (Bb) in measure 11, and includes a section labeled "A" with a double bar line. The third system (measures 16-20) starts with a measure rest, followed by a key signature change to one sharp (F#) in measure 17, and ends with a double bar line.

10

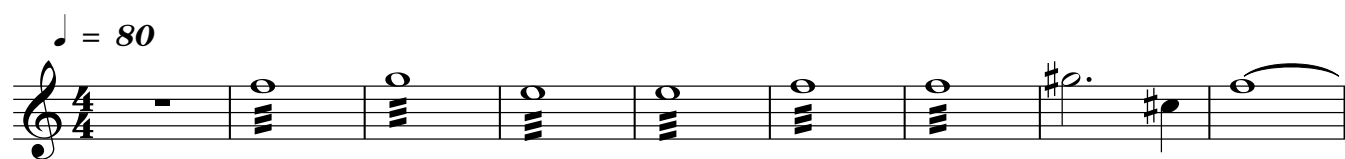
A

2

16

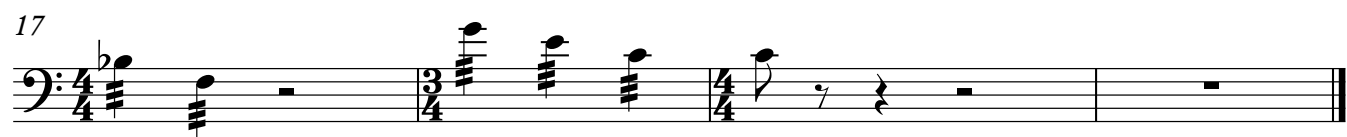
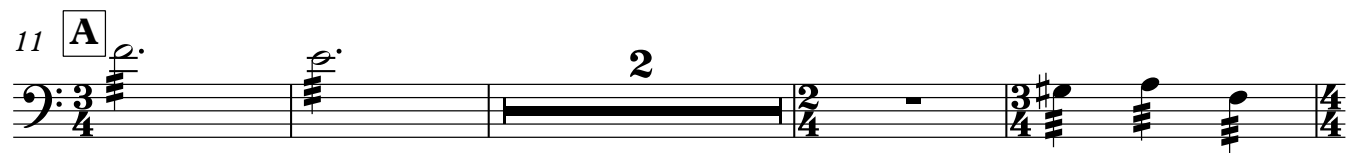
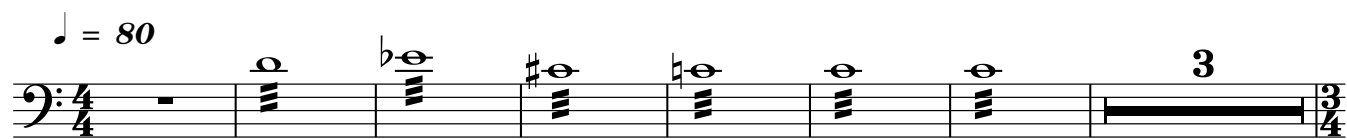
Violin 2

Opening



Violoncello

Opening



Contrabass

Opening

♩ = 80

10 **A** 2 pizz.

16